



Grenache

UNDER CONSTRUCTION

SEPTEMBER 2023



BUILDING SPECIFICATION

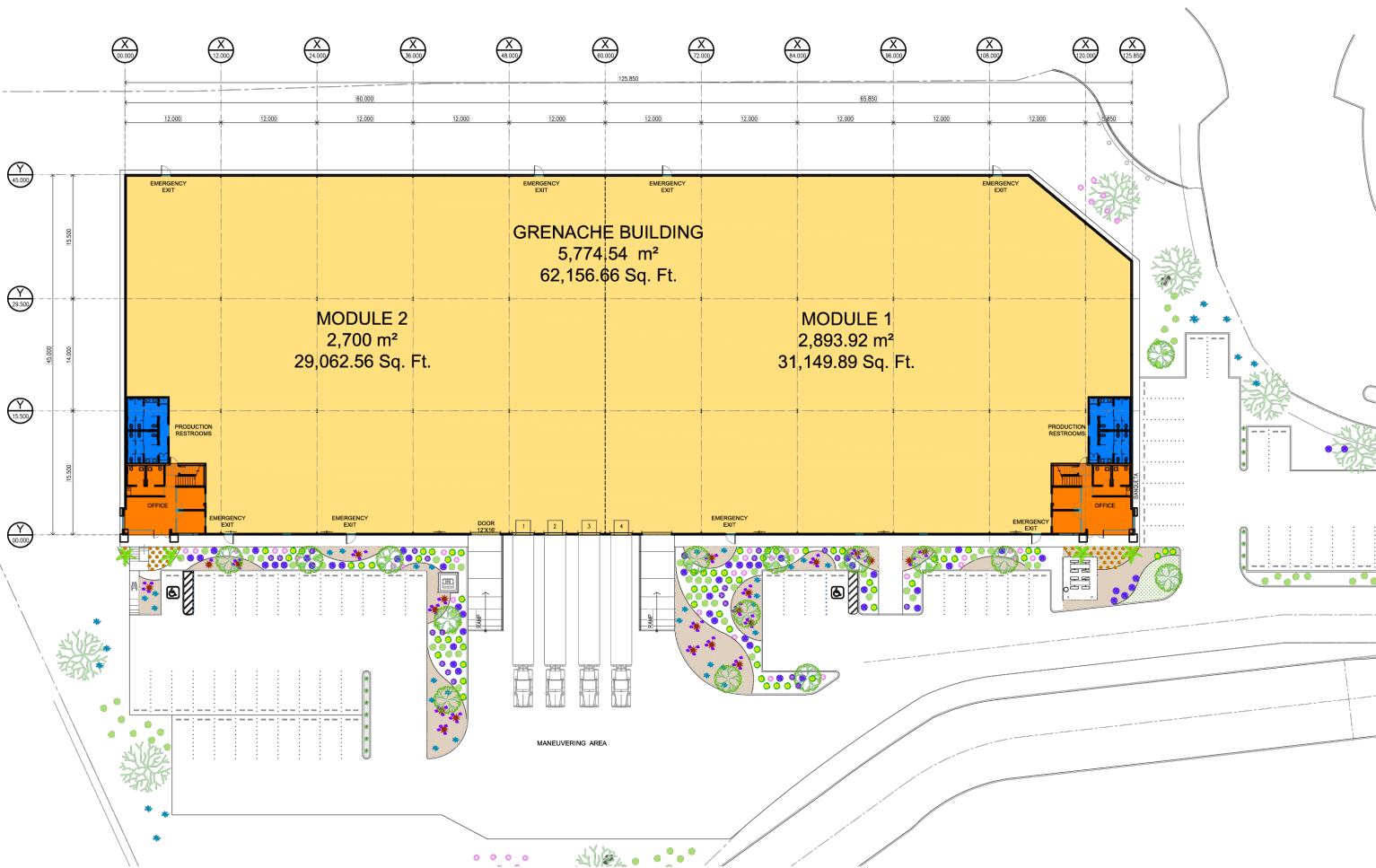
TOTAL AREA

62,157 sq.ft. (5,775 m²)

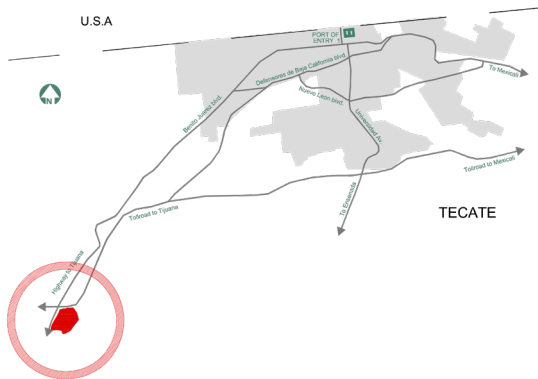
Office	3,888 sq.ft. / 361 m ²	Floor slab thickness	5 in Load capacity 8 ton / m ²
Production restrooms	Men & Women for 110 people	Loading docks	4 (9 ft x 10 ft) / (2.7 m x 3 m)
Bay spacing	40 ft x 50 ft / 12 m x 15 m	Ramps	2 (12 ft x 16 ft) / (3.6 m x 4.8 m)
Clear height	22 ft / 6.7 m	Lighting	LED Light
Max height	27 ft / 8.2 m	Electrical substation	150 KVA
Construction type	7 Inch concrete tilt up	Fire prevention system	Hoses & cabinets
Roof	KR-18 Standing seam metal	Parking spaces	60
Roof & walls insulation	R-11 Fiberglass	Divisible modules	2 Modules
Loading dock equipment	Bollards, dock seals, insulated door and Levelers capacity 35,000 lbs	Skylight	4% on roof and lateral windows for natural light

More information

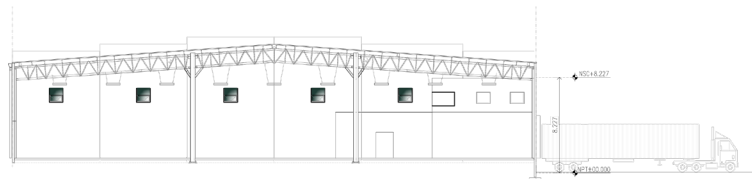




LOCATION MAP



BUILDING SECTION



PRODUCTION
58,269 sq.ft.

OFFICE AREA
3,888 sq.ft.

TOTAL AREA
62,157 sq.ft.

