



# Chardonnay

UNDER CONSTRUCTION

MAY 2023



BUILDING SPECIFICATION

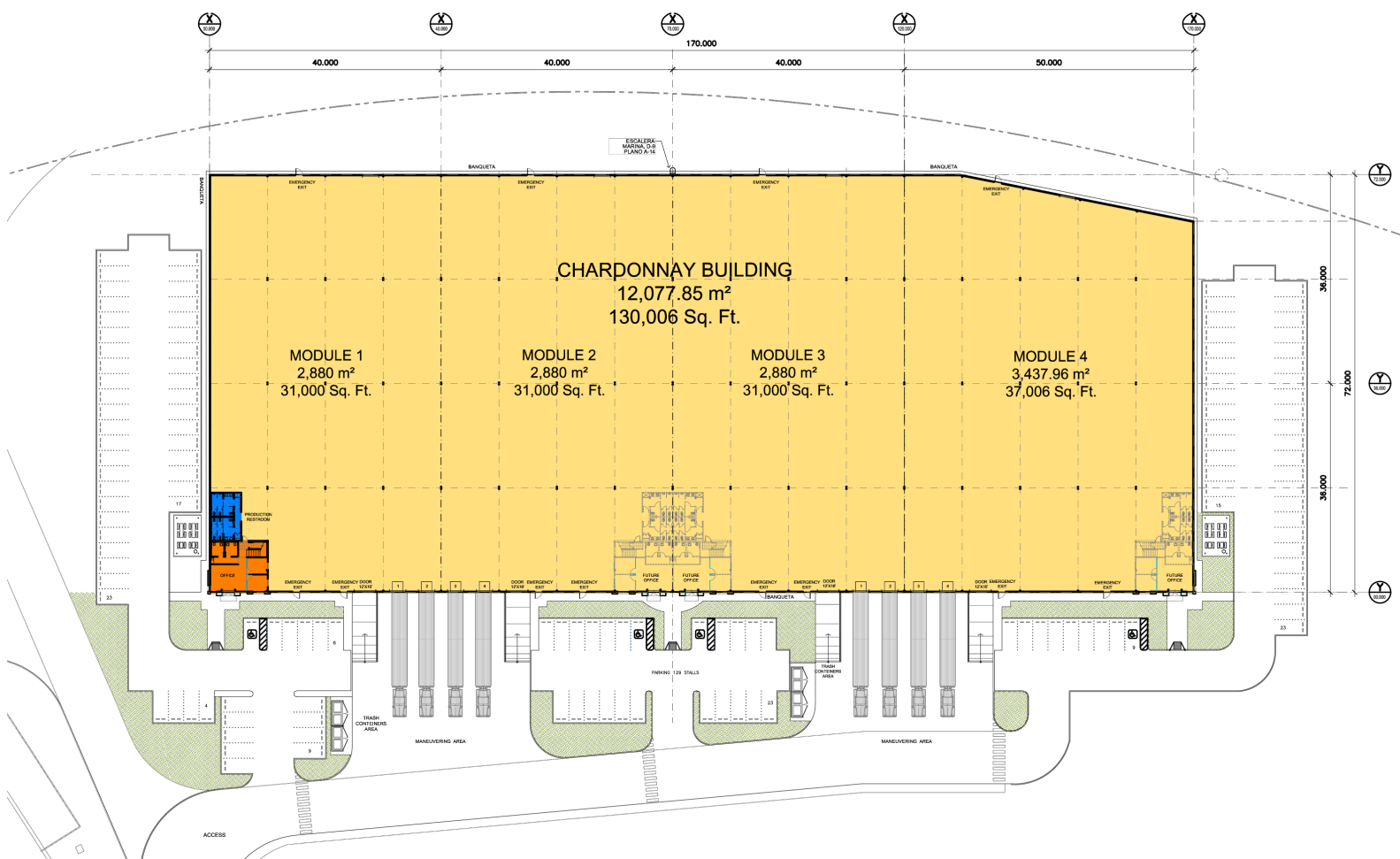
**TOTAL AREA**

**130,006 sq.ft.** (12,077 m<sup>2</sup>)

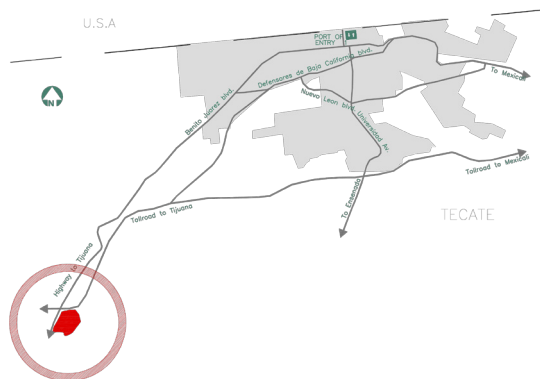
Office	1,944 sq.ft. / 180 m <sup>2</sup>	Floor slab thickness	5 in Load capacity 8 ton / m <sup>2</sup>
Production restrooms	Men & Women for 110 people	Loading docks	8 (9ft x 10ft) / (2.7m x 3m)
Bay spacing	59 ft x 33 ft / 18 m x 10 m	Ramps	4 (12ft x 16ft) / (3.6m x 4.8m)
Clear height	22 ft / 6.7 m	Lighting	LED Light
Max height	27 ft / 8.2 m	Electrical substation	150 KVA
Construction type	7 Inch concrete tilt up	Fire prevention system	Hoses & cabinets
Roof	KR-18 Standing seam metal	Parking spaces	130
Roof & walls insulation	R-11 Fiberglass	Divisible modules	4 Modules
Loading dock equipment	Bollards, dock seals, insulated door and Levelers capacity 35,000 lbs	Skylight	4% on roof and lateral windows for natural light

More information

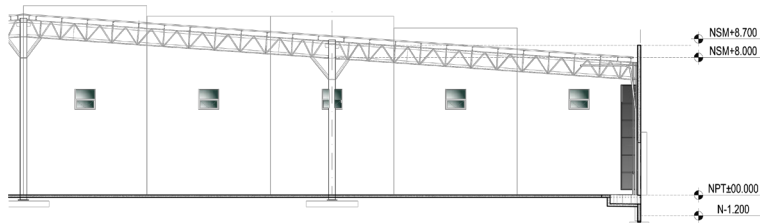




LOCATION MAP



BUILDING SECTION



PRODUCTION  
**128,062 sq.ft.**

OFFICE AREA  
**1,944 sq.ft.**

TOTAL AREA  
**130,006 sq.ft.**

